

# Anti-CDH17 hlgG1 Reference Antibody (BI-905711)

## Product Information

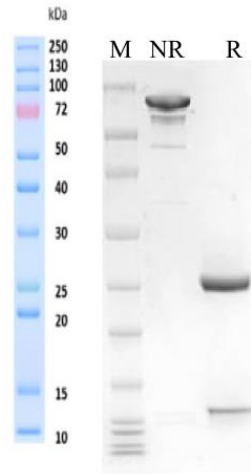
<b>Product Name</b>	Anti-CDH17 hlgG1 Reference Antibody (BI-905711)
<b>Storage temp.</b>	Store at 2-8°C short term (1-2 weeks).Store at $\leq -20^{\circ}\text{C}$ long term. Avoid repeated freeze-thaw.
<b>Catalog# / Size</b>	GM-87095MAB-1mg / 1 mg GM-87095MAB-5mg / 5 mg GM-87095MAB-25mg / 25 mg GM-87095MAB-50mg / 50 mg GM-87095MAB-100mg / 100 mg

## Antibody Information

<b>Expression System</b>	CHO
<b>Aggregation</b>	< 5% as determined by SEC-HPLC
<b>Purity</b>	> 95% as determined by SDS-PAGE
<b>Endotoxin</b>	< 1 EU/mg, determined by LAL gel clotting assay
<b>Sterility</b>	0.2 $\mu\text{m}$ Filtered
<b>Target</b>	CDH17
<b>Clone</b>	BI-905711
<b>Alternative Names</b>	CDH16, HPT-1, HPT1
<b>Source/Isotype</b>	Human IgG1 ,Kappa
<b>Application</b>	Flow cytometry
<b>Description</b>	This gene is a member of the cadherin superfamily, genes encoding calcium-dependent, membrane-associated glycoproteins. The encoded protein is cadherin-like, consisting of an extracellular region, containing 7 cadherin domains, and a transmembrane region but lacking the conserved cytoplasmic domain. The protein is a component of the gastrointestinal tract and pancreatic ducts.
<b>Formulation</b>	phosphate-buffered solution, pH 7.4.

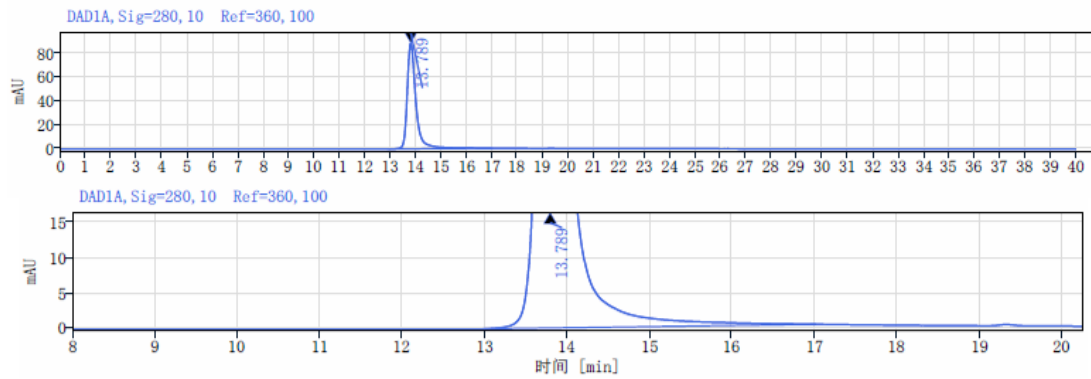
## Data Examples

### SDS-PAGE



On SDS-PAGE under reducing (R)/non-reducing(N-R) condition. The gel was stained overnight with Coomassie Blue. The purity of the protein is greater than 95%.

### SEC-HPLC

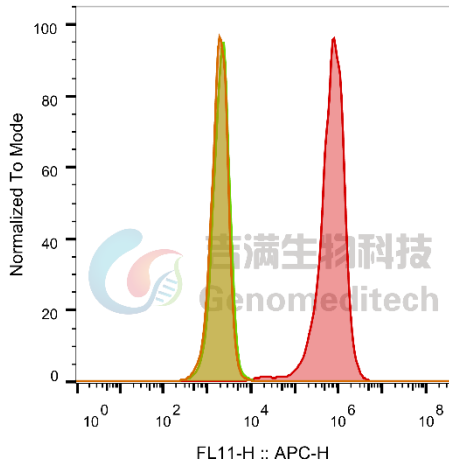


The purity of this product is more than 95% verified by SEC-HPLC

## Data Examples

Flow cytometry

H\_CDH17 SW480 Cell Line (Catalog # GM-C31741) was stained with Anti-CDH17 hlgG1 Reference Antibody (BI-905711) (Catalog # GM-87095MAB) or isotype control antibody, followed by anti-Human IgG APC-conjugated Secondary Antibody.

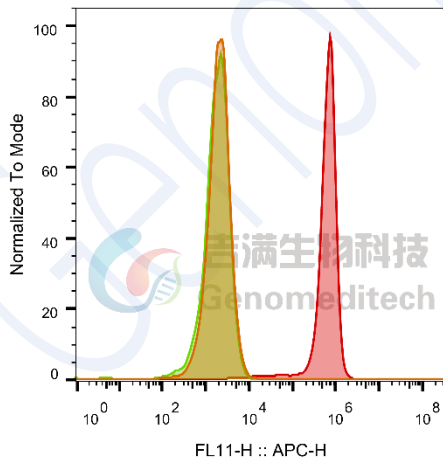


SampleID	Geometric Mean : FL11-H
SW480 anti-CDH17+APC-2nd Ab	1897
SW480 H_CDH17 H_IgG+APC-2nd Ab	2081
SW480 H_CDH17 anti-CDH17+APC-2nd Ab	6.55E5

Fig. FACS

Flow cytometry

H\_CDH17 HCT116 Cell Line (Catalog # GM-C30949) was stained with Anti-CDH17 hlgG1 Reference Antibody (BI-905711) (Catalog # GM-87095MAB) or isotype control antibody, followed by anti-Human IgG APC-conjugated Secondary Antibody.



SampleID	Geometric Mean : FL11-H
HCT116 anti-CDH17+APC-2nd Ab	1940
HCT116 H_CDH17 H_IgG+APC-2nd Ab	1708
HCT116 H_CDH17 anti-CDH17+APC-2nd Ab	5.66E5

Fig. FACS